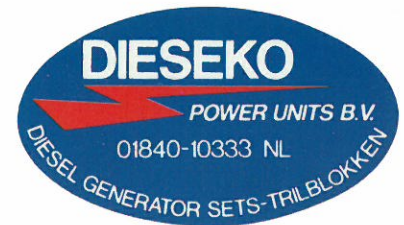


# DIESEKO

## Hydro-Power Unit Model 250



### General specifications:

flow : 0-260 l./min.  
maximum pressure: 380 bar

#### diesel engine

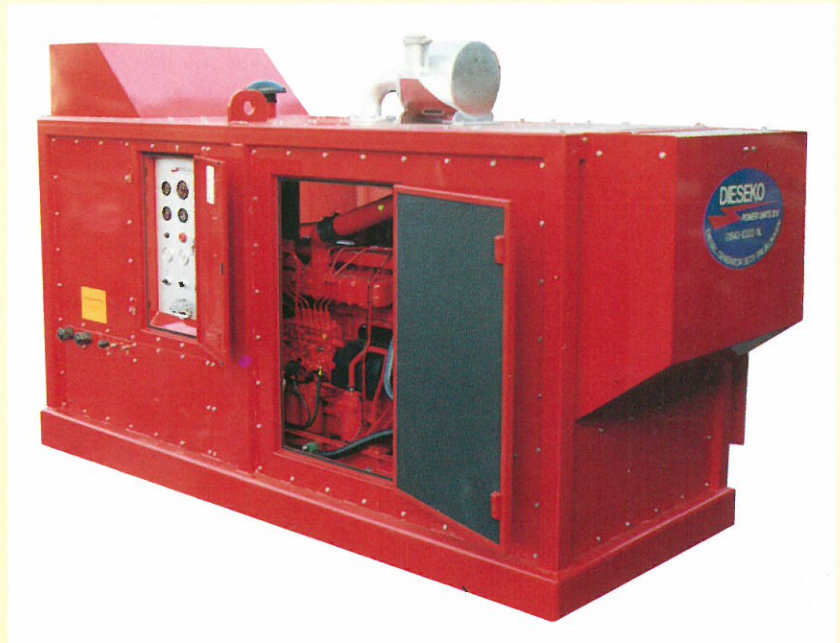
manufacture : **DAF**  
type : DHS 825 A  
capacity : 187 Kw/253 HP - 2400 rpm  
DIN standard 6270 B

#### hydr. pump:

**Hägglungs-Denison**  
P 7 P  
Swept volume 119 cc  
displacement control:  
elektro-hydraulic stroker

### details of tank contents:

gas oil tank 285 l.  
hydraulic tank 230 l.



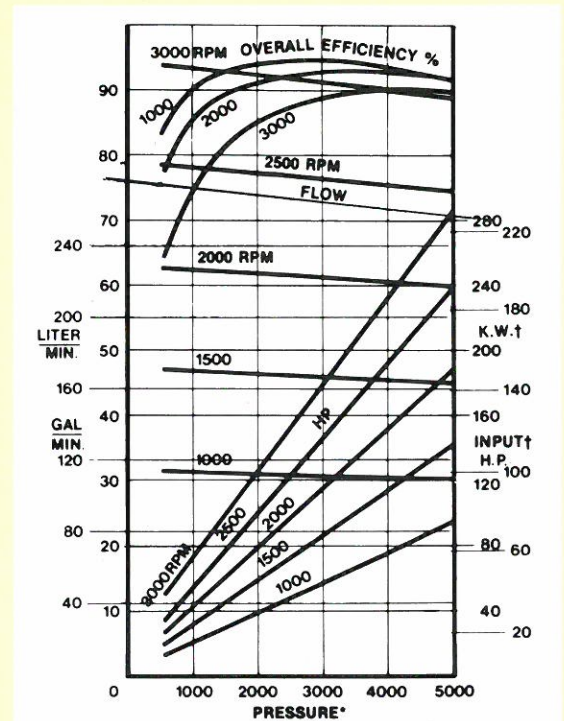
### dimensions and weights:

lxwxh (mm) : 3400x1200x1900  
weight : 3200 kg

## The advantages of a DIESEKO Hydro-Power Unit are:

- technically very high grade construction with a.o. extra hydraulic oil filters and protection, upgrated drive and remote control technology.
- The encasing of the unit is protected by a square steel tubular section and the plating is made of zinc plating.
- The unit is constructed with sound-proofing.
- The hydraulic system is a closed-loop system, which guarantees continuous lubrication and cooling of the hydraulic components.
- The pump is automatically regulated with regard to pressure and output; this prevents the need for application of overflow valves, preventing the oil from overheating.
- The speed of revolutions of the vibration block can be regulated by a potentiometer which drives the hydr. pump in and out; the speed of revolutions with the accompanying capacity is therefore maintained at its maximum.

We would be pleased to go over more advantages with you in a personal discussion.



Capacity graph with a pump driven at full power.  
Type P 7 P swept volume 119 cc.